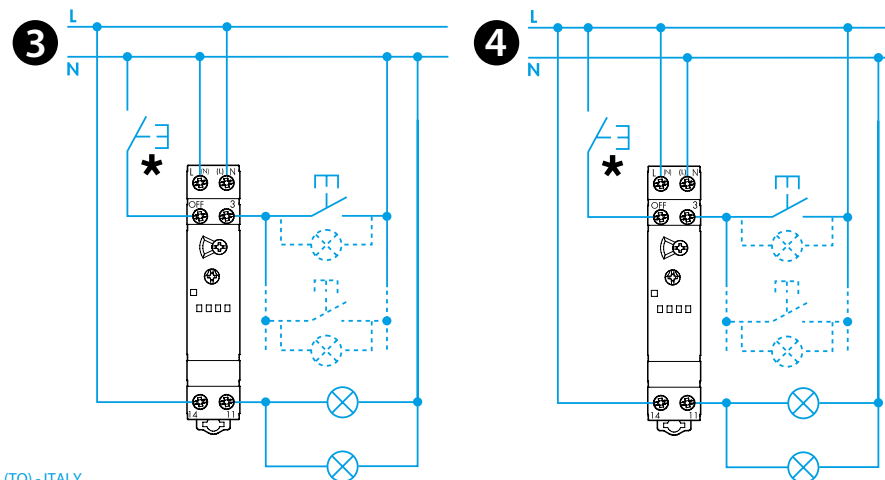
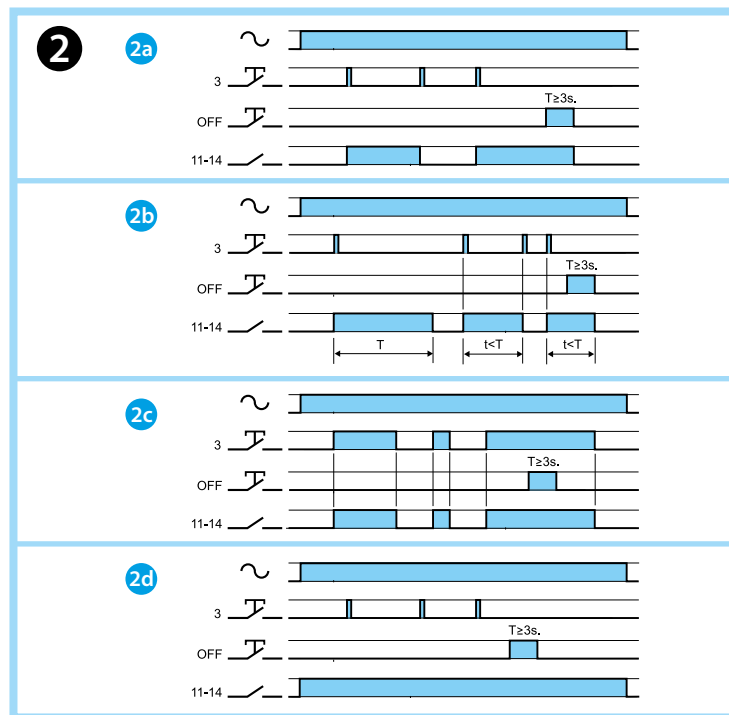
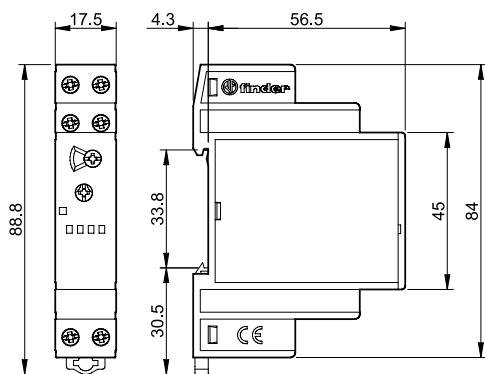
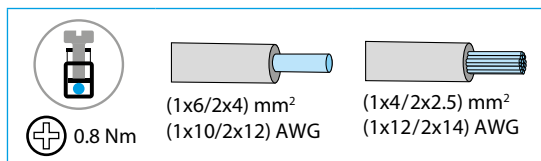
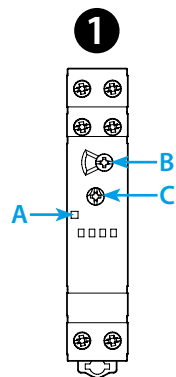




13.61

EN 60669 - 1 / EN 60669 - 2 - 1										
	13.61.8.230.0000 U_N 110...240 V AC (50/60 Hz) U_{min} 90 V AC U_{max} 264 V AC									
	P 3.2 VA / 1 W									
	1 NO (SPST-NO) 16 A 250 V AC									
	<table border="0"> <tr> <td>AC1</td> <td>4000 VA</td> </tr> <tr> <td>AC15 (230 V)</td> <td>750 VA</td> </tr> <tr> <td> (230 V AC)</td> <td>3000 W</td> </tr> <tr> <td> (230 V AC)</td> <td>1000 W</td> </tr> <tr> <td>CFL-LED (230 V)</td> <td>600 W</td> </tr> </table>	AC1	4000 VA	AC15 (230 V)	750 VA	(230 V AC)	3000 W	(230 V AC)	1000 W	CFL-LED (230 V)
AC1	4000 VA									
AC15 (230 V)	750 VA									
(230 V AC)	3000 W									
(230 V AC)	1000 W									
CFL-LED (230 V)	600 W									
	(-10...+60)°C									
IP20										



ENGLISH

13.61
MULTIFUNCTION STEP WITH RESET COMMAND
 35 mm (EN 60715) rail mount, suitable for 3 or 4 wire.
 "Zero Crossing" load switching.

- 1 FRONT VIEW**
 A LED
 B Function rotary selector
 C Time adjustment trimmer (0.5-20 minutes)

- 2 FUNCTIONS**
 2a RI Step relay
 2b IT Timing step relay
 2c RM Monostable relay
 2d Light on

- 3 WIRE CONNECTION DIAGRAM**
 * RESET (centralised switch off)
- 4 WIRE CONNECTION DIAGRAM**
 * RESET (centralised switch off)

NOTE
 - Max cable length for push-button connection: 200 m
 - Max. no. of illuminated push-button (≤ 1 mA): 10
 - Maximum impulse duration: continuous

WORKING CONDITIONS
 In conformity with the European Directive on EMC (2004/108/EC), the relay has a level of immunity, against radiated and conducted disturbances, considerably higher than requirements of EN 60669-1 and EN 60669-2-1 standard. However, devices like transformers, motors, contactors, switches and power cables may cause disturbances and even damage the timer electronic circuit. For that reason, the wiring cables must be as short as possible, and, when necessary, the timer should be protected by a relevant RC network, varistor or surge voltage protector.

