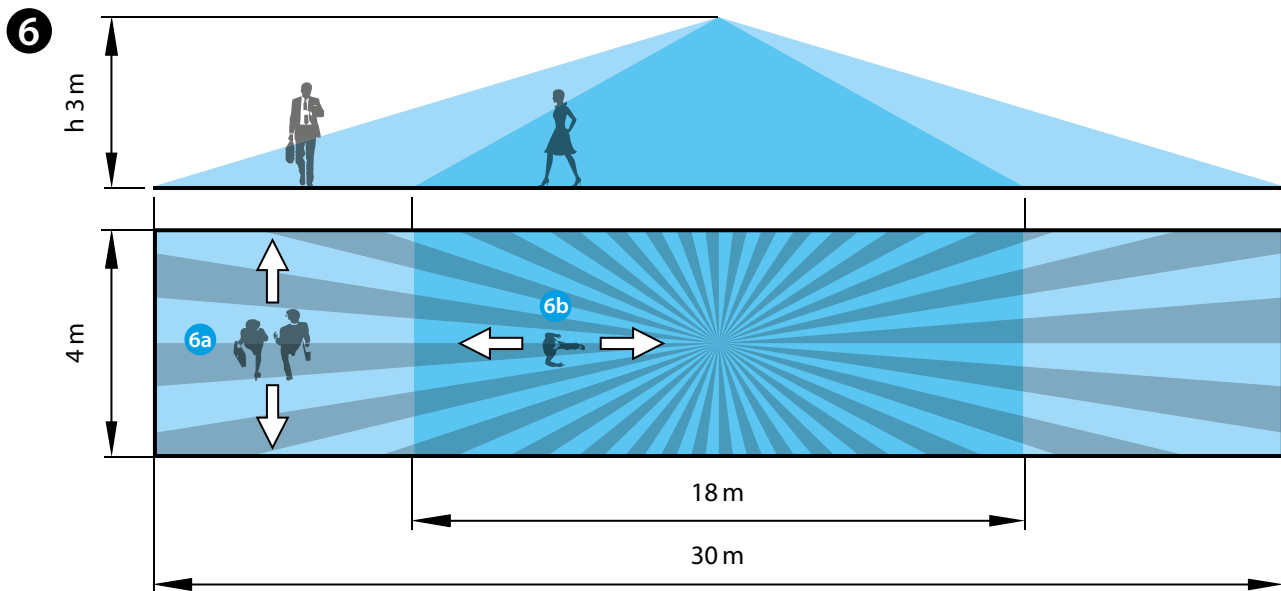
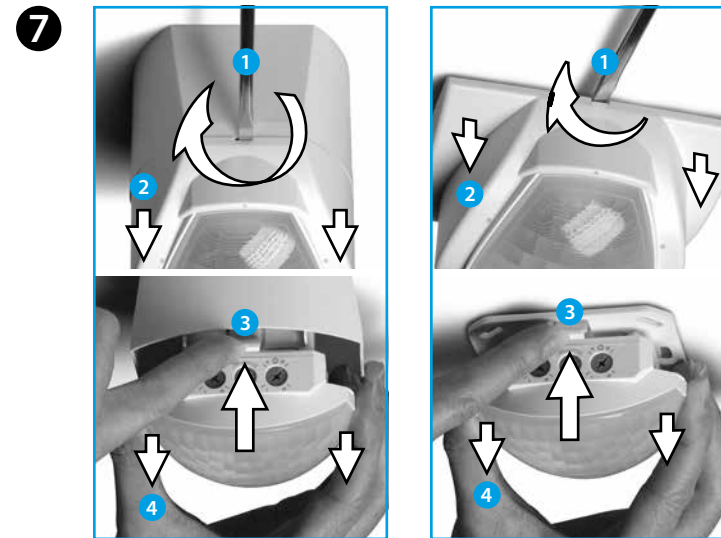
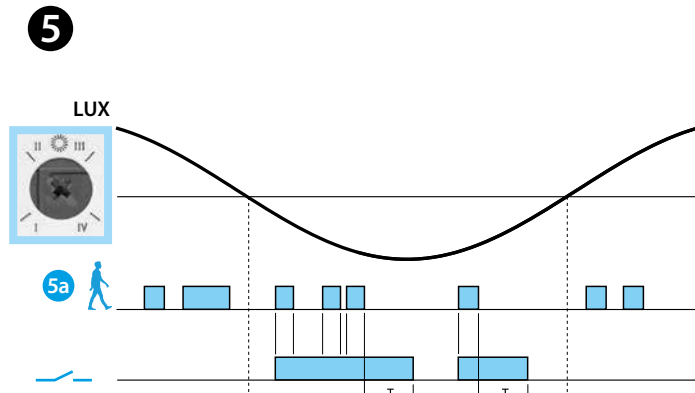
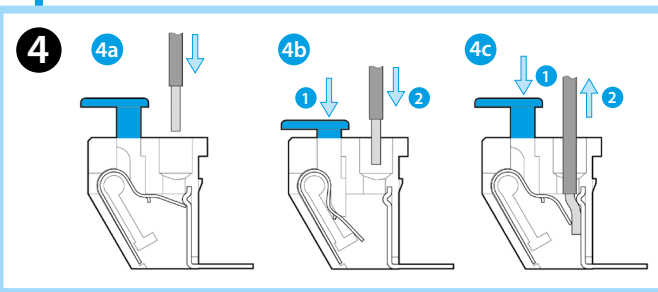
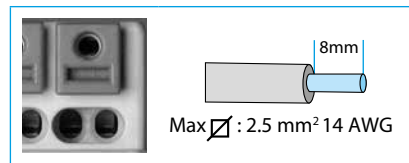
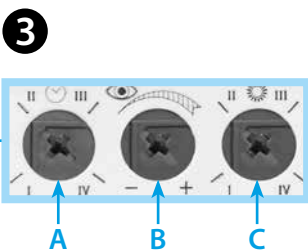
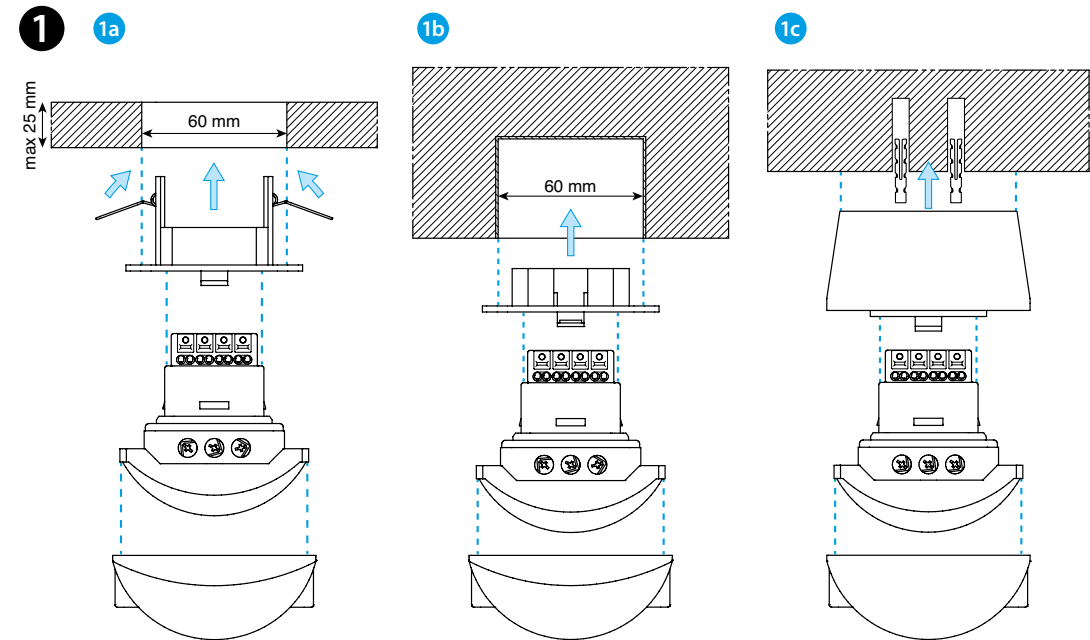
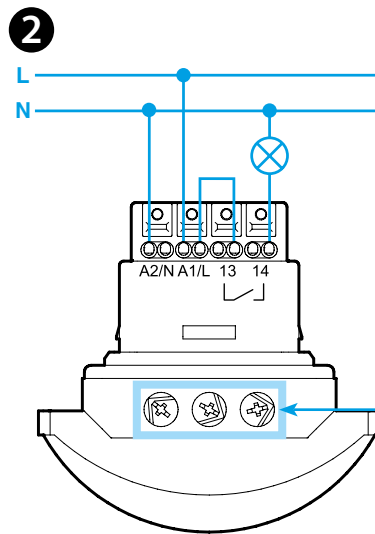




18.41

EN 60669-1 / EN 60669-2-1	
18.41.8.230.0300	
U _N (110...230)V AC (50/60 Hz)	
U _{min} 96 V AC	
U _{max} 253 V AC	
P 1.5 VA (50 Hz) / 1 W	
1 NO (SPST-NO)	
10 A 250 V AC	
AC1	2500 VA
AC15	450 VA
(230 V)	1000 W
(230 V)	350 W
(230 V)	300 W
(-10...+50)°C	
IP40	



ENGLISH

18.41 PIR MOVEMENT DETECTOR FOR CORRIDORS

- 1 INSTALLATION**
 - 1a Suspended ceiling mounting
 - 1b Recess mounting
 - 1c Surface mounting
 - 2 WIRING DIAGRAM**
 - 3 SETTINGS**
 - A turn-off delay setting (I=12s; II=3 min; III=15 min; IV=35 min)
 - B sensitivity setting: Adjust sensitivity to suit the location and avoid false triggering
 - C ambient light intervention threshold setting (I=1lx; II=10lx; III=500lx; IV= always ON (∞ lx))
 - 4 TERMINAL PUSH-IN CONNECTION**
 - 4a Connection - solid cable or with ferrules
 - 4b Connection - stranded cable
 - 4c Disconnection
 - 5 FUNCTION CHART**
 - 5a Detection of movement
 - Output Contact
 - 6 SENSING AREA**

Sensing area (h=3 m):
30m length - 4m width

 - 6a Tangential movement
 - 6b Radial movement
 - 7 DISMOUNTING**
- NOTE**
Following the initial power-on, and power-on following a power interruption, the detector makes a hardware-software initialisation for approximately 30 seconds.

