

ENGLISH

18.51 PIR MOVEMENT AND PRESENCE DETECTOR with Bluetooth programming

1 INSTALLATION 1a Suspended ceiling mounting
1b Recess mounting - 1c Surface mounting

2 WIRING DIAGRAM
2a Lock / unlock PIN selector

3 PUSH-IN TERMINALS
3a Connect using solid cable or with ferrules
3b Connect using stranded cable
3c Disconnect

4 FUNCTION CHART
Output Contact - Detection of movement

5 SENSING AREA
5a presence (micromovements): (4x4) m - (h=3 m)
5b movement: (8x8) m - (h=3 m)

6 DEMOUNTING

7 SETTINGS
The settings (delay setting, sensitivity setting, ambient light intervention threshold setting, PIN) are made by smartphone through **Finder Toolbox** App, downloaded by:

- 7a Apple Store for Apple devices
 - 7b Google Play for Android devices
- 1 On smartphone: open the Finder Toolbox App
 - 2 Select "Configure your device" - "18 Series" - "18.51"
From the list (nearest device listed first) select the device.
A red light on 18.51 confirms the connection.

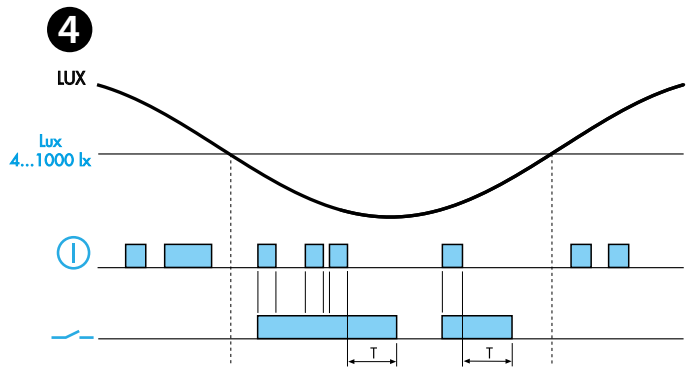
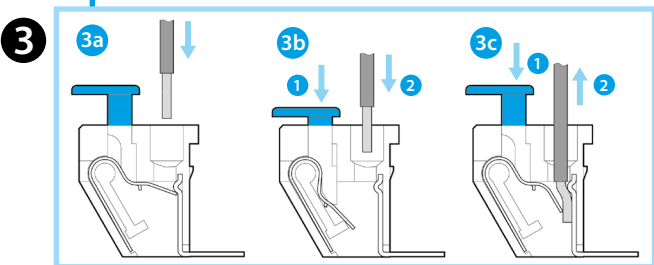
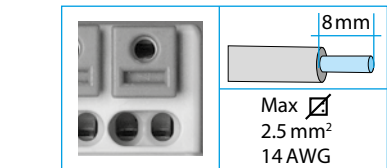
Settings
- Delay setting: (12 s...25 min)
- Sensitivity setting: adjust sensitivity to suit the location and avoid false triggering
- Ambient light intervention threshold: (4 lx...1000 lx)

- PIN setting**
- 1 On 18.51: set the selector 2a to
 - 2 On smartphone: open the Finder Toolbox App
 - 3 Select "Configure your device" - "18 Series" - "18.51"
 - 4 From the list (nearest device listed first) select the device.
A red light on 18.51 confirms the connection.
 - 5 Push the lock icon and enter the PIN
 - 6 On 18.51: rotate the selector 2a from to

NOTE
When locked by PIN code, the code will be requested each time the user wishes to change the settings of the device



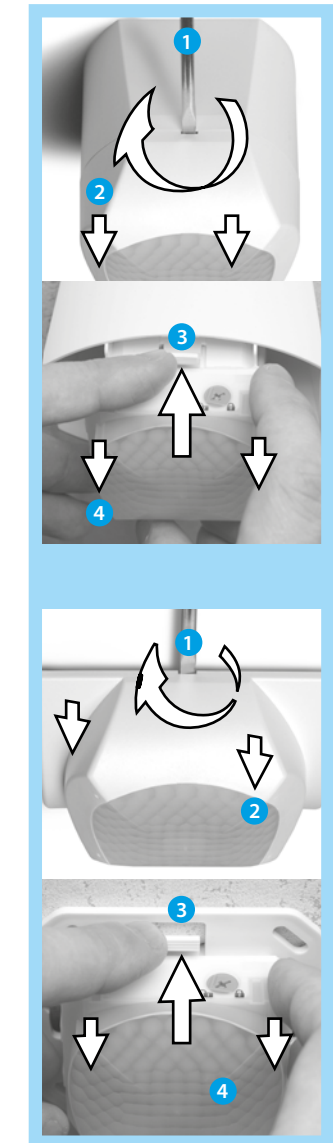
| | |
|--|---------------|
| EN 60669 -1 / EN60669 - 2 -1 | |
| 18.51.8.230.B300 | |
| U _N (110...230) V AC (50/60 Hz) | |
| U _{min} 96 V AC | |
| U _{max} 253 V AC | |
| P 1.5 VA (50 Hz) / 1 W | |
| 1 NO (SPST-NO) | |
| 10 A 230 V AC | |
| AC1 | 2300 VA |
| AC15 (230 V AC) | 450 VA |
| (230 V AC) | 1000 W |
| (230 V) | 350 W |
| CFL-LED (230 V) | 300 W |
| | (-10...+50)°C |
| IP40 | |



7 Bluetooth

7a Download on the App Store

7b GET IT ON Google Play



18.51

