

REPORT

84 Series



finder[®]

SWITCH TO THE FUTURE



Multifunction Digital Timer

SMARTimer

Type 84.02

Offering flexibility, easy installation and high precision timing.

Quick and flexible programming right from your smartphone. With NFC technology and "Finder Toolbox" Android App.

Digital Timer "Two in one": two totally independent programmable channels, in a single product.



Approvals (according to type)

Features

- Two programming modes: "Smart" mode via smartphone with NFC communication or "Classic" mode via the joystick
- Wide backlit display for easy reading of all information during the programming phase and during normal operation
- Flexibility: it's possible to create new specific functions, mixing the **30 available functions** on each channel
- High precision and possibility of choice in time set-up:
 - Time units; 0.1 seconds, seconds, minutes, hours
 - Set-time to 4 digits, anywhere between 000.1 second and 9999 hours
- Large display allows easy viewing: set time, current time, timing in progress, input command state, output state
- 1 CO (16 A) + 1 CO (16 A) output contacts



Type 84.02.0.230.0000

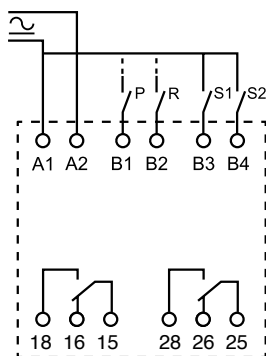
- Nominal voltage: 110...240 V AC/DC (non-polarized)
- Operating range: 90...264 V AC/DC (47/63Hz)



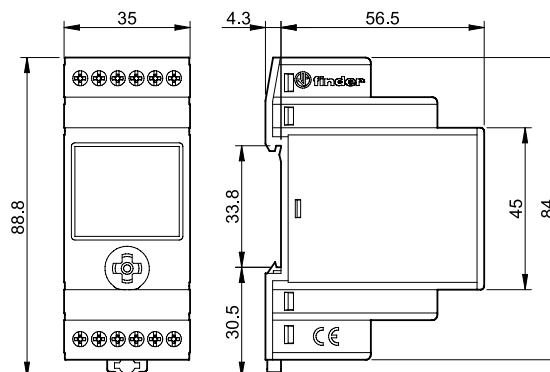
Type 84.02.0.024.0000

- Nominal voltage: 12...24 V AC/DC (non-polarized)
- Operating range: 10...30 V AC/DC (47/63Hz)
- It's possible to directly connect timer input to proximity sensors (both PNP and NPN)

Functions	OFF	Relay OFF
	ON	Relay ON
	AI	On-delay
	DI	Interval
	GI	Pulse delayed
	LI	Asymmetrical flasher (starting pulse ON)
	PI	Asymmetrical flasher (starting pulse OFF)
	SW	Symmetrical flasher (starting pulse ON)
	SP	Symmetrical flasher (starting pulse OFF)
	AE	On-delay with control signal
NEW	AC	On-delay with maintained control signal
	BE	Off-delay with control signal
	DE	Interval with control signal ON
NEW	DC	Interval with maintained control signal
	EE	Interval with control signal OFF
	FE	Interval with control signal ON and OFF
	EEa	Interval with control signal OFF (retriggerable)
	EEb	Interval with control signal OFF
	WD	Watchdog (retriggerable interval with control signal ON)
	GE	Pulse delayed with control signal ON
NEW	GC	Pulse delayed with maintained control signal
	LE	Asymmetrical flasher (starting pulse ON) with control signal
NEW	LC	Asymmetrical flasher (starting pulse on) with maintained control signal
	PE	Asymmetrical flasher (starting pulse OFF) with control signal
NEW	PC	Asymmetrical flasher (starting pulse off) with maintained control signal
	CEb	On and off independent delays with control signal
	IT	Timing step
	SS	Monostable controlled by Signal switch
	PS	Monostable controlled by Pause switch
	SHp	Shower function (off-delay with control signal and pause signal)



- Two independent Start inputs - one per channel
- One common Reset input (select to apply to either, or both, channels)
- One common Pause input (select to apply to either, or both, channels)
- PIN to protect access to programming session
- Up or Down timing modes
- Setting accuracy-full range: $\pm 0.05\%$
- Ambient temperature range: $-20^{\circ} + 50^{\circ}$
- 35 mm rail (EN 60715) mount



FINDER reserves the right to alter characteristics at any time without notice.FINDER assumes no liability for damage to persons or property, caused as a result of the incorrect use or application of its products.

ZDPENUSRE84 - V/19